

Welcome to

ADS Innotech Pvt. Ltd.

Manufacturer of Performance-Critical Applications



Create... Enhance... Sustain...



Main Values of ADS Innotech

- Skilled and Qualified Engineers & Staff.
 - Fastest Growing Company.
 - Reliable and Sustainable Solutions.
 - Performance-Critical Applications.
 - Materials:
 - Stainless Steel
 - Nickel based alloys
 - Titanium
 - Aluminum
 - Manufacturing
 - Laser Cutting, Bending, Forming
 - Machining
 - Welding
 - Assembly
-

Main Values of ADS Innotech

- Design:
 - Mixing Vessels, Pressure Vessels, Heat Exchangers.
 - Software; PV-Elite, HTRI, Pro-E, Solid-works and Auto CAD
 - Equipment Designed as per ASME, PD 5500, AD 2000 Merk-blatt, IS, EN 13445, PED/97/23/EC, TEMA
 - Cost competitive Quality Manufacturing Solutions in various Applications.
 - Covering Total Supply Chain.
 - ISO 9001:2015, ISO 3834-2, AD2000 HP0 Certified Company.
 - Prototype Models.
 - FAIR (First Article Inspection Report) and FAA.
 - Kind of products:
 - Pharmaceutical Equipments
 - Gas Turbine Spares
 - Heat Exchangers & Pressure Equipments
 - Critical Small Parts
 - Piping & Skid Equipments
-

Vision:

To be best and cost effective product design and manufacturing company by “**Doing it Right the First Time**” through “**Continuous Learning**”

Mission:

To provide products and services to customers by being strategic partners in helping them to achieve their business objectives and to create an environment in which our vibrant community of employees will “love to learn” and “execute innovatively” to meet customer needs.

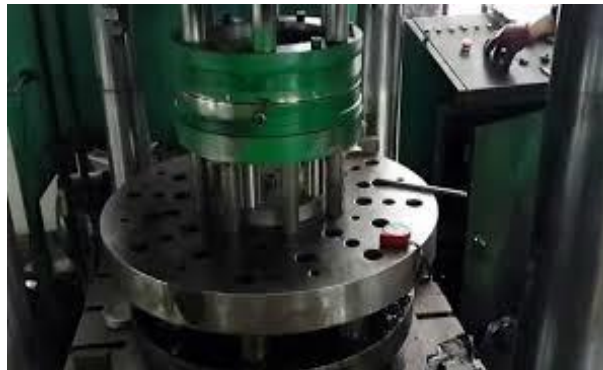
The core values on which **ADS Innotech** exist and operate are,

- Quality “Non-Negotiable”
- Customers’ satisfaction “Paramount”
- Continual improvement “Mandatory for Existence & Excellence”
- Fulfillment of “Commitment” to all Stakeholders.
- “Caring” for Employees.
- “Build Open & Honest” relationships with Communication.



Our manufacturing expertise are in following areas,

- Design & Manufacturing of Mixing Vessels, Heat Exchanger & Pressure Vessels.
- Gas Turbine Combustion Liner Spares, Various shapes Seals.
- Critical Fabrication & Welded Assemblies in almost all material grades.
- Critical Machining Components.
- Fabrication of Structures, Piping Fabrication & Skids Mounting Assemblies.
- Development of parts by Reverse Engineering.
- Tool Designing, Draw Parts & Formed Parts.



Quality Policy:

- Customer satisfaction
- Quality Products (specified)
- Delivered On Time
- Competitive Price
- Continually Improving
- Employee Development and Involvement

Quality Management System:

- Standard procedure though out all Production and Engineering steps
- Technical and audit controls
- Control Manufacturing Cycle



Third Party Support; All Types of NDT Testing, CMM for critical dimensional check.

ADS Innotech basics:

- Successful Health, Safety, Quality and Environmental Management
- Our ability to Continually Improve the Quality of our Products
- Best interest of our Stakeholders
 - Customers
 - Shareholders
 - Employees
 - Suppliers
 - Community

The objectives of ADS Innotech are to,

- Pursue highest possible standards
 - Comply all legal and industry requirements
 - Provide adequate control of health, safety and environmental
 - Minimize the incidence of occupational and reduce waste
 - Ensure the quality of product or service delivered
-



Fabrication Shop

Neat and Clean Setup, Better Visuals, Good Shop Layout, Disciplined Workforce, Focus on Proper Planning, Right First Time, High Quality Standards, Continual Improvement ;

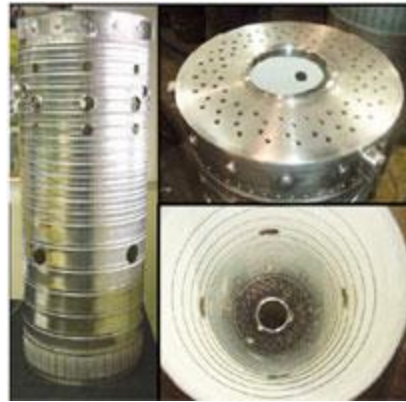


Machining Shop

Neat and Clean Setup, Better Visuals, Good Shop Layout, Disciplined Workforce, Focus on Proper Planning, Right First Time, High Quality Standards, Continual Improvement ;



Pharmaceuticals Equipments



Gas Turbine Spares



Heat Exchangers



Pressure Vessels



Defence Sectors



Piping & Skid Equipments



Critical Small Parts

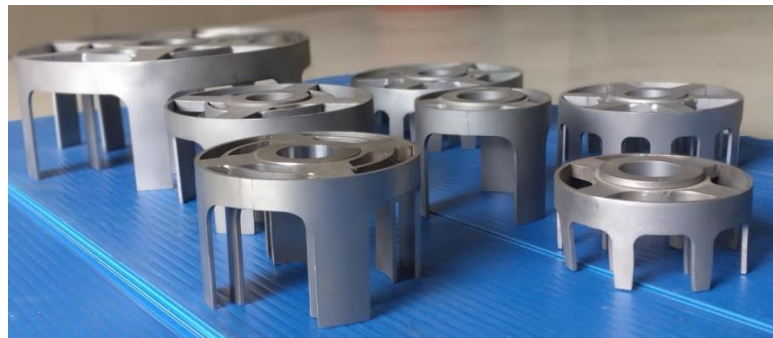


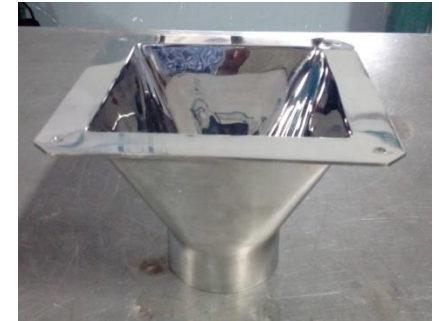
Reverse Engineering

ADS Innotech recognized high Quality Pharma Hygiene Products supply in a wide variety of stainless steel mixing containers and vessels with mixers/agitators mounted on to standard Pharma Hygiene containers, customized Pharma Hygiene containers, or custom stainless steel containers designed to meet your individual specification.

Options ,

- Material : stainless steel 316L, 316Ti
 - Surface finish : $\leq 0.2 \text{ um}$
 - Surface polishing : mechanical. Electro polishing
 - Pressure : pressure-less / -1/10 bar (g)
 - Temperature: -20°C to 200°C
 - Cleaning options: CIP / WIP
 - Design : Single, double and triple wall design, heat-able, insulated
 - Flat, flat sloping, cone or dished container bottom
 - Mixing solution (high shear, propeller, agitator etc. of varying power and speed)
 - Additional ports
 - Jackets (heated, cooled or insulated)
-





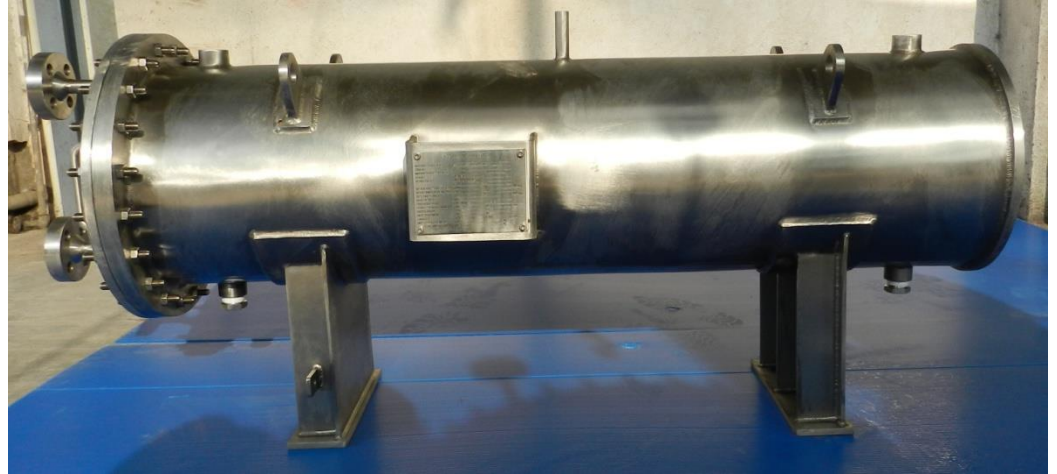
ADS Innotech Typically, engineering or design phase attributes to only 5% of the total project cost whereas it impacts almost 90% of the project outcome. So, what Pareto would tell us is that we invest in robust and impeccable engineering consulting. If you believe this, you are at the right place.

At ADS Innotech, we provide critical support for anything and everything pertaining to process engineering and design. We have in-house capabilities for static equipment design and piping engineering. We provide end to end support for all requirements concerning finite element analysis. We are a one stop solution to every process need of yours!

We have diverse and rich experience in Oil and Gas, Food and Pharmaceuticals, Fertilizers, metallurgy, Water treatment amongst others. We are updated to all national and international codes, standards and statutory requirements. We cater to high pressure, high temperature services, extreme corrosion services, cyclic process and other complexities

Pressure Vessels, Heat Exchangers & Columns are designed by our competent Design Engineers using latest software like PV-Elite, HTRI, Pro-E ,Solid-works and Auto CAD These equipment's are designed as per international codes like ASME, PD 5500, AD 2000 Merk-blatt, IS, EN 13445, PED/97/23/EC, TEMA or as per any other international code.

Our team relentlessly strives to provide custom made solutions to client needs whilst ensuring technical robustness and economic viability. Our quality systems and flawless procedures ensure a smooth and hassle-free project success. At ADS Innotech, your satisfaction is our victory!



Design & Manufacturing of Heat Exchanger (*In Accordance with ASME Section VIII Division I & II, TEMA*)

ADS Innotech is a leading provider of spare parts for heavy and light industrial gas turbines. We Supply the highest quality gas turbine combustion liner spares, various seals, critical machining components, all conforming to Original Equipment Manufacturer (OEM) specifications.

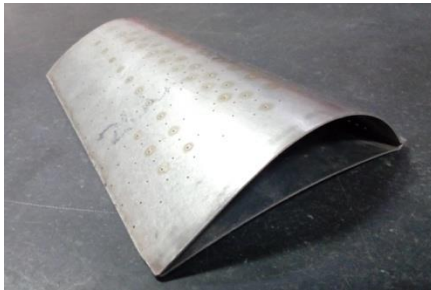
We have industry experience and a company-wide focus on staying up-to-date on the latest industry developments, so we can provide the best possible components to our customers. Each of our supplied parts conforms to OEM standards, including raw material, manufacturing process, nondestructive testing, and surface treatment.

Our parts are reverse engineered from original equipment manufacturer (OEM) components and are enhanced where necessary. Our parts are interchangeable with OEM parts.

We are dealing into,

- Combustion Liner Spares
- Critical machining parts
- Seals

Materials we are dealing in Gas Turbine spares are Alloy 617, Hastelloy X, X22CrMoV 12.1, L 605, X750 etc.



Ajay Pimple

+91 7774004436

ADS Innotech Pvt. Ltd

Registered Office:

B/3 12, Parshwa Vihar, Sun City Road,
Opp. Santosh Hall, Pune – Sinhadgad Road,
Pune – 411051, India

Works:

50, B.U. Bhandari Industrial Estate,
Pune Nagar Road, Sanaswadi,
Pune-412 208

Email: ajay.pimple@adsinnotech.com

Web: www.adsinnotech.com

THANK YOU

